

Two species of *Corydalis* sect. *Elatae* (excerpt from Flora of China)

=====

286. *Corydalis elata* Bureau & Franchet, J. Bot. (Morot). 5: 20. 1891.
gao jing zi jin

Herbs, perennial, 35-60 cm tall, glabrous. Rhizome short, with fleshy scales that become dark on drying, terminating in a small rosette of leaves. Stems 1-4, erect, 35-60 cm, branched, with 2-4 leaves from middle upward. Radical leaves: petiole 8-18 cm; blade glaucous abaxially, green adaxially, 4-6 × 5-8 cm, bi-(tri-)ternate with leaflets shallowly to deeply divided into obovate entire to divided lobes; ultimate lobes 2-8 mm wide, obtuse; cauline leaves smaller, shortly stalked, less divided. Racemes dense at first, elongating in fruit, 10-30-flowered; bracts 6-11(-15) mm, upper linear to narrowly oblanceolate, entire to slightly dentate, lowermost usually larger and divided, or even similar to uppermost leaf. Pedicel thin, 10-20 mm, 13-25 mm in fruit. Sepals 1-2 mm, finely dentate. Corolla blue to purplish blue; outer petals with short dentate crest not overtopping apex; upper petal 19-24 mm; spur straight or slightly downcurved, cylindric, not tapering, 10-12 mm; nectary ca. 2/3 as long as spur; lower petal 12-13 mm, with broadly rhombic, acuminate, dentate limb attenuate to gibbous claw; inner petals 10-12 mm. Stigma square, narrowly emarginate with 4-6 marginal simple papillae; geminate papillae lateral (submarginal) and on basal lobes. Capsule pendent from erect-spreading pedicel, obovoid to elliptic, 5-12-seeded, 10-15 × 3-4 mm, explosively dehiscent; style ca. 3 mm. Seeds ca. 1.5 mm, smooth. Fl. and fr. May-Sep.

Understories of subalpine conifer forests, shrubs, slope grasslands or slope sides; 2900-4000 m. W Sichuan (Kangding, Luding, Wabaoshan, Xide).

=====

291. *Corydalis omeiana* (C. Y. Wu & H. Chuang) Z. Y. Su & Lidén, Novon. 17: 485. 2007.
jin ding zi jin

Corydalis flexuosa Franchet var. *omeiana* C. Y. Wu & H. Chuang, Acta Bot. Yunnan. 13: 131. 1991; *C. flexuosa* subsp. *omeiana* (C. Y. Wu & H. Chuang) C. Y. Wu.

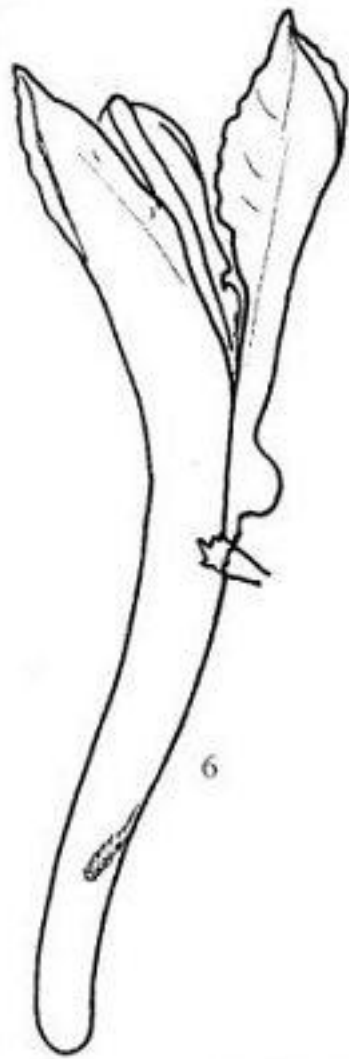
Herbs, perennial, 35-80 cm tall, glabrous or rarely papillose on inflorescence; leaves sometimes densely and finely papillose abaxially. Rhizome 1-2 cm with densely set imbricate fleshy scales that become dark on drying, terminating in a small rosette of leaves; sometimes with slender stolons. Stems 1-3, erect, 35-70 cm, simple or branched above, with 3-6 leaves in upper 1/2 (rarely a long-stalked leaf on lower part). Radical leaves few; petiole 5-10(-20) cm; blade glaucous abaxially, green adaxially, 1.5-3 × 2-4 cm, ternate to biternate; leaflets shallowly to deeply divided into obtuse or acute lanceolate to oblong lobes. Cauline leaves 2-5 × 2-5 cm, lower shortly stalked, upper sessile; blade like radical leaves. Racemes dense at first, elongating in fruit, 6-15-flowered; bracts 5-12 mm, broadly oblanceolate with lateral narrow lobes or teeth, lowermost usually larger, deeply palmatisect into obovate lobes, upper ones often entire. Pedicel thin, 10-20 mm in fruit. Sepals early falling, whitish, ovate, slightly thick, uneven, 2-3.5 × 2-3 mm, finely dentate. Corolla blue to purplish blue, slightly nutant in bud. Outer petals without crest, conspicuously acuminate; upper petal 23-31 mm, entire; spur straight, slightly tapering, 12-18 mm; nectary 2/3-3/4 as long as spur; lower petal 12-15 mm, with broadly ovate, shortly acuminate, dentate limb sharply set off from short straight claw (in bud margin of lower petal embracing upper petal); inner petals 10-14 mm. Stigma square, slightly emarginate; marginal simple papillae: median 2 distinct, lateral broad, indistinct; geminate papillae lateral and on well-developed basal lobes. Capsule pendent from straight, erect-spreading pedicel, narrowly obovoid, 10-13 × ca. 2 mm, 10-15-seeded; style ca. 3.5 mm. Seeds ca. 1 mm, smooth, with appressed elaiosome. Fl. and fr. May-Sep.

Forest understories, shrubs at forest margins, glades, disturbed ground; 2100-3400 m. C Sichuan (Emei Shan, Wawu Shan, Yingjing).

Plants from Wawu Shan have large flowers.

Basic differences
=====

species	radical leaf size	flower density	outer petal crest	square stigma	sepals
elata	4.0-6 × 5-8 cm	10-30-flowered	short dentate crest	4-6 marginal simple papillae	1-2 mm
omeiana	1.5-3 × 2-4 cm	6-15-flowered	without crest	papillae: median 2 distinct	2-3.5 × 2-3 mm



6. **C. elata** Bureau & Franchet, 高茎紫堇 gao jing zi jin.
Flower. (FOC 403; FRPS 32: 153, 154, 146, pl. 25: 6.
1999. —1. 吴锡麟 Wu Xilin; 2–6. Magnus Lidén).

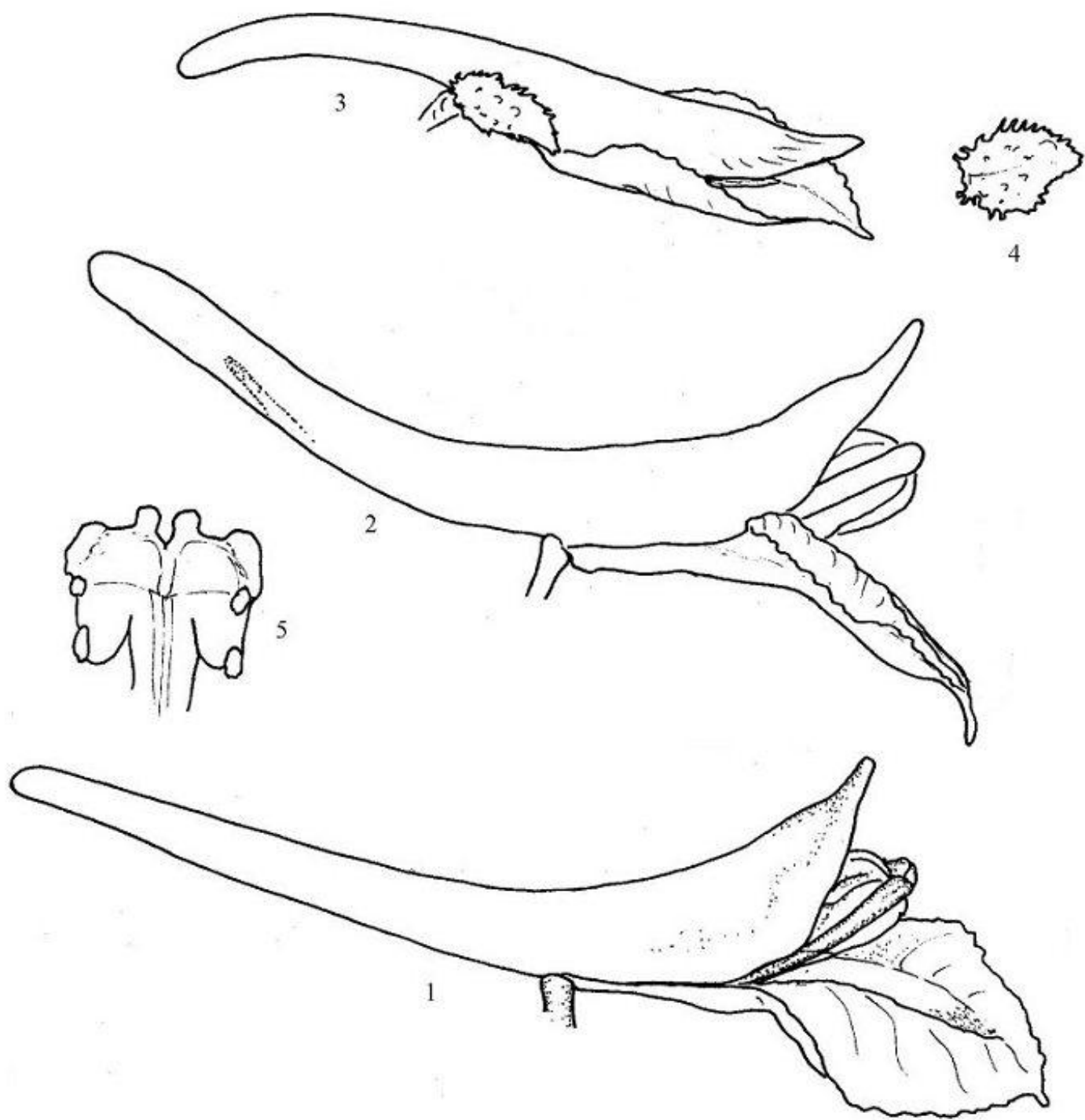


Figure 453. 1–5. *Corydalis omeiana* (C. Y. Wu & H. Chuang) Z. Y. Su & Lidén, 金顶紫堇 *jīn dǐng zǐ jīn*. 1–3. Flowers. —4. Sepal. —5. Stigma. (FOC 405; FRPS 32: 118. 1999. —Magnus Lidén).